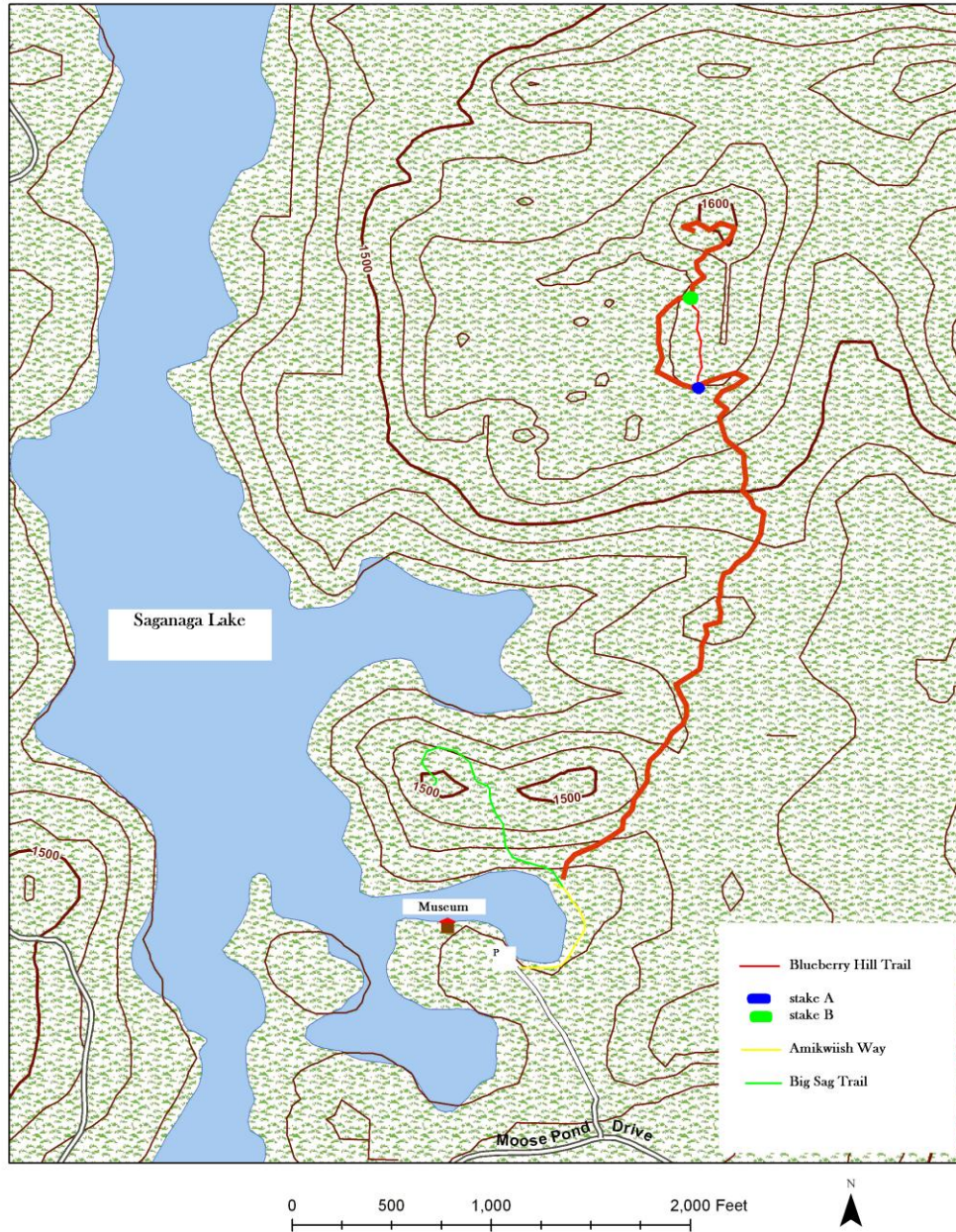


Blueberry Hill Trail



Approximately 0.9 miles one way - round trip travel time is anywhere from 45 minutes – 3 hours. *Be sure to allow enough time to return to the museum parking lot before the driveway gate is locked at 5 p.m.* If you wish to stay after 5 p.m., please park your vehicle at the end of the driveway, outside gate.

The trail begins just beyond the picnic table at the end of Amikwiish Way Trail. Pass the table and start on the Big Sag Trail for approximately 50 feet. Turn right onto Blueberry Hill Trail at sign. Blue flagging tape marks the trail. The Trail follows the old Gneiss Lake Trail for about .5 miles. Blaze trees – which have shallow axe cuts about six feet up the trunk on both sides- from the Gneiss Lake Trail are marked with double orange or pink flagging. About $\frac{3}{4}$ of the way in, the trail divides at stake A. You can either go over the granite knob in front of you or head west around the knob; both routes will get you to stake B at the foot of Blueberry Hill.

Bring binoculars, water, camera, a berry pail and be sure to wear sturdy footwear. Path can be mucky after wet weather.